

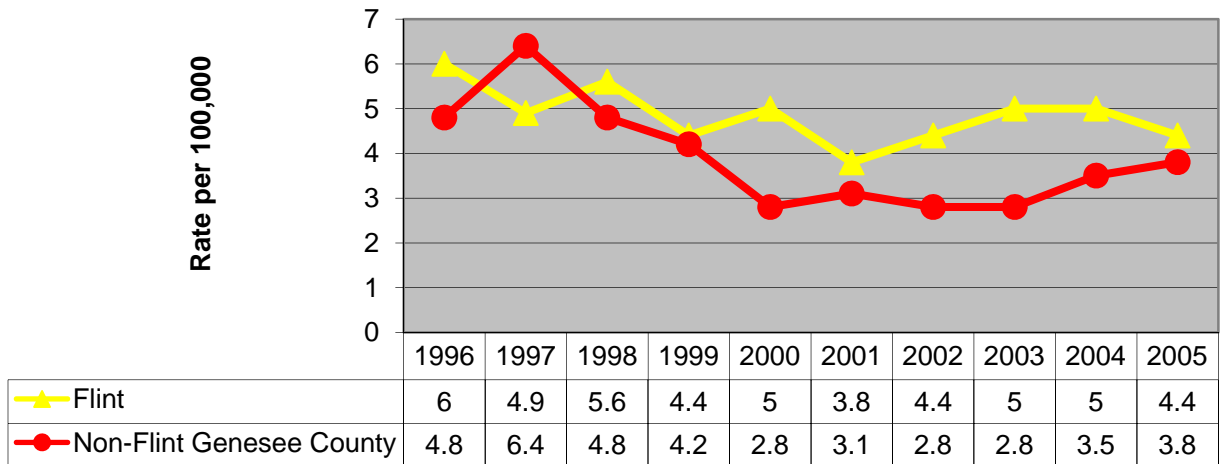


Mission: To improve the quality of life for children and families in Genesee County through assessment, awareness, advocacy and action.

Fact Sheet 2.4 Youth Suicide and Homicide

Suicide among young people, below the age of 25, is a major cause of death in the United States. Rates of suicide among youth are unacceptable since it is not a natural cause and is viewed as mostly preventable. Due to low numbers, it is statistically meaningless to attempt to calculate an incidence rate based upon a single year's data for even a fairly large such city as Flint. For this reason, rate based upon the-three year moving average number of suicides is used to describe trends over time. Historically, there is consensus that suicides, especially in youth, are under reported.

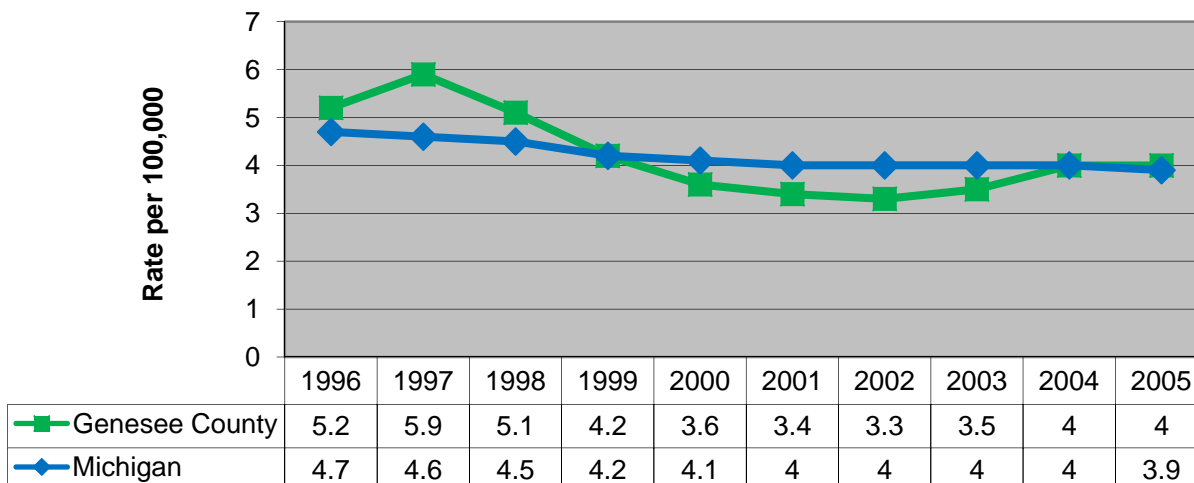
**Suicide Rate for People Under 25 years of Age
Flint and Non Flint Genesee County
3-year moving averages**



- The Suicide rate for Flint decreased from 2004 to 2005 and over the period of nine years. The rate for out-county youth suicides increased slightly between 2004 and 2005.
- However, the rate has decreased over all.

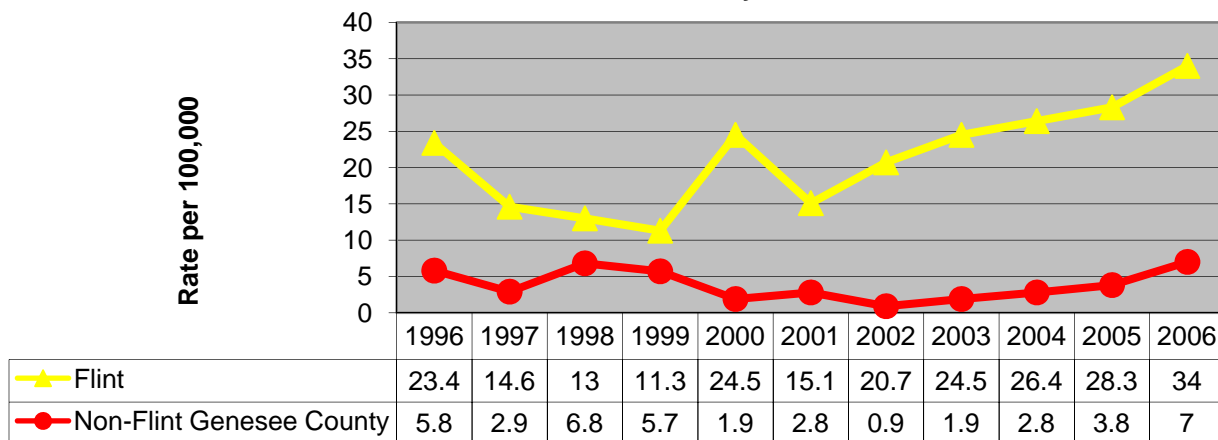
CONTINUED....

**Suicide Rate for People Under 25 years of Age
Genesee County and Michigan 1996-2005
3-year moving averages**



- The youth suicide rate in Michigan has declined overall but has remained general steady over the past five years.
- The youth suicide rate in Genesee County has remained the same 2004-2005 but has decreased overall.

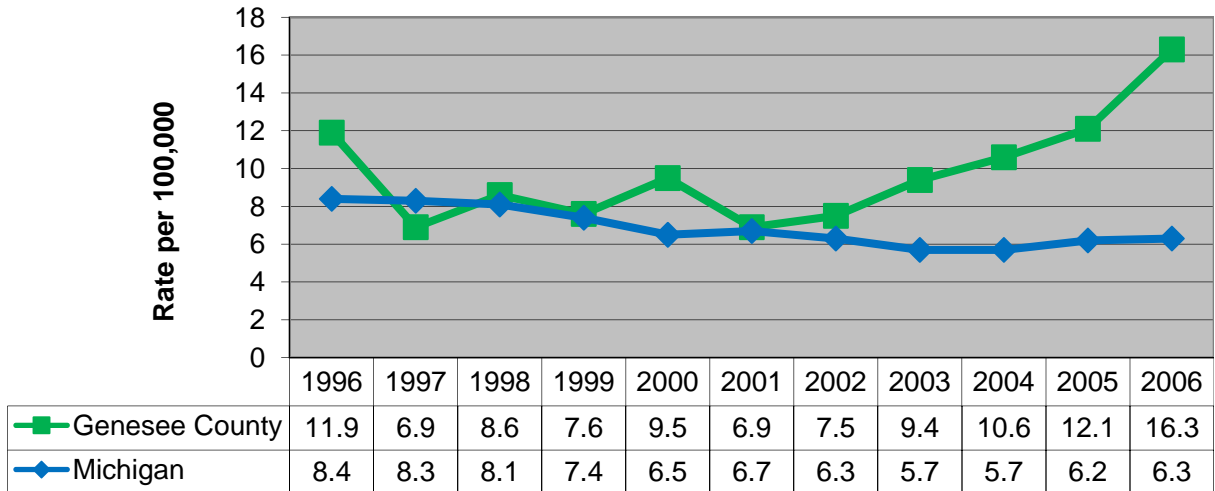
**Homicide Rate for People Under 25 Years of Age
Flint and Non-flint Genesee County, 1996-2006**



- Homicide is much more common than suicide among young people in this age group, and for that reason, it is possible to calculate one-year rates per 100,000.
- In 2000, there was a jump in homicides in people under 25 in the City of Flint.
- In the years following, there has been a steady climb in the rate in Flint.
- The homicide rate in Genesee County outside of Flint has been consistently low.

CONTINUED....

Homicide Rate for People Under 25 years of Age
Genesee County and Michigan, 1996-2006



- The homicide rate in Michigan has been falling steadily from 8.4 to 6.3 per 100,000.
- The homicide rate in Genesee County has increased substantially over the years.

Beyond the Numbers

The numbers and graphs cannot depict the emotional background against which they are set. Hopelessness needs to be addressed on many fronts – school, community, and faith-based organizations. There is also a tendency to underreport suicides such as those resulting from accidents. These deaths may be attributed to blunt force trauma or chest injuries, when in actuality they were the results of deliberate acts.

Examples of Intervention Efforts

- **Mott Children’s Health Center’s TeenScreen Program (Columbia University)** has suicide/mental health screening sites at Northwestern, Beecher Middle High School, Holmes, Zimmerman, Bendle, Boys and Girls Club, Traverse Place. Screenings are also available at Mott Children’s Health Center. In addition to screening for risk factors, another goal is to help communities develop permanent mental health screening centers.
- **School-based Health Centers** operate at Northwestern and Beecher. Their services include services by mental health specialists.
- **Youth Violence Prevention Center** – Works with youth and community groups to address issues of violence in the community.

Source: Genesee County Health Department
Revised: 12/5/2008



806 Tuuri Place ▼ Flint, MI 48503 ▼ ph: 810.234.5007 ▼ fx: 810.234.5017
kids@prioritychildren.org ▼ www.prioritychildren.org