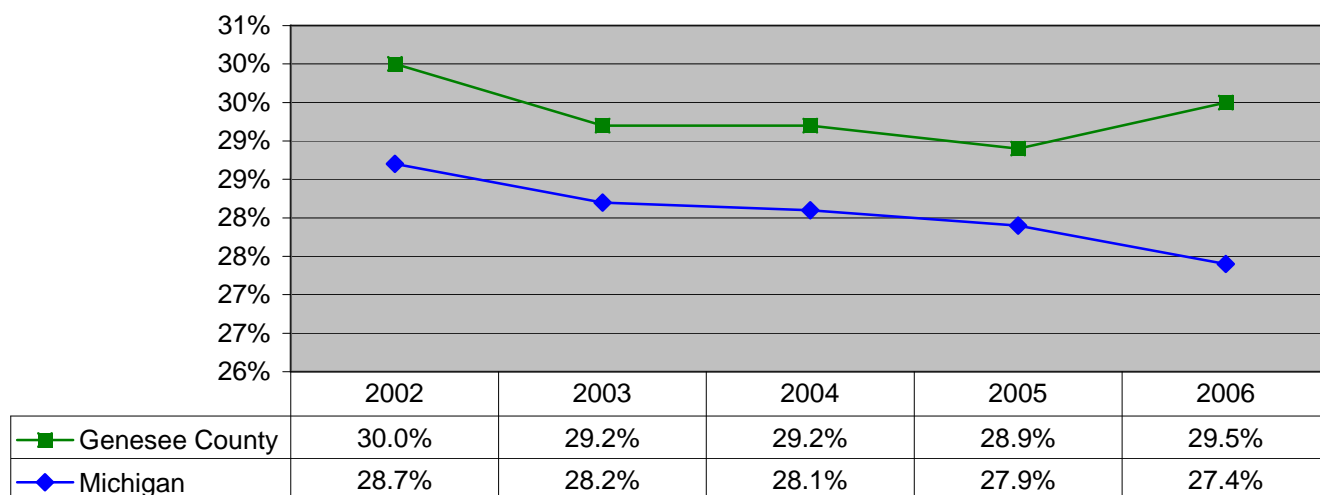


**Fact Sheet 1.1
Child Population**

The population of children in any region is important because it determines the basic level need for educational, medical, and social services to children. (Other population-specific factors as well, of course, can and do affect the level and type of specific needs within that child population.)

The proportion of children in a given population is also an important factor in understanding social and economic trends in a region.

**Estimated Percent of Child Population 0-19
Genesee County and Michigan
2002-2006**



Numbers of Children 0-19		
Year	Genesee County	Michigan
2002	131,136	2,805,095
2003	127,680	2,771,351
2004	128,217	2,774,179
2005	127,002	2,756,431
2006	126,227	2,770,515

BEYOND THE NUMBERS

Awareness of the county's child population, its growth or decline, tells us what services and perhaps more importantly, what levels of services – medical, education, child care, early childhood, after school programs – are needed. Declining proportions of children may suggest that people of child-rearing age are leaving the area in response to economic or other conditions. As a result, the age distribution in the population could be getting progressively older. We can better ascertain and meet the needs of children and families, and better obtain appropriate funding when we know this information. Where the child population is centered should impact the location of child-related services as well. These services need to be accessible.

Sources: US Bureau of the Census

http://factfinder.census.gov/servlet/DatasetMainPageServlet?_lang=en&_ts=223552020248&_ds_name=DSS_2001_EST_G00_&_program=

Note: Child Population reflect the age of 0-19

Revised: 3/14/08